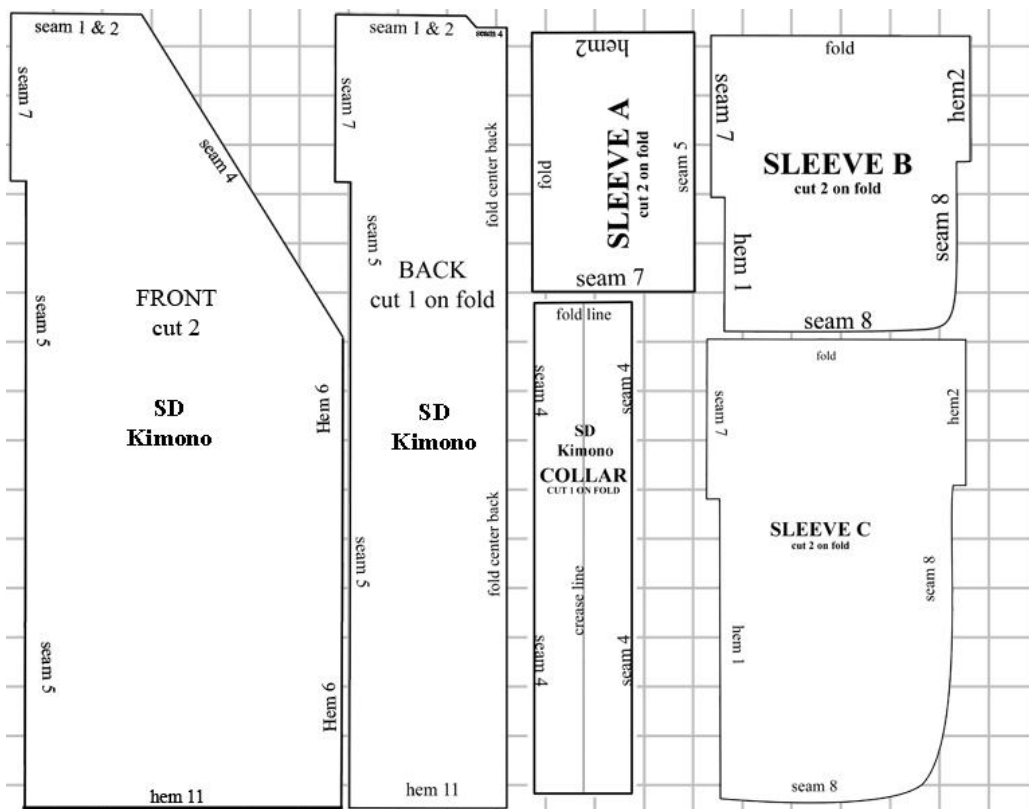


# Easy Kimono

Fits SD and SD13

Visit [www.UndeadThreads.org](http://www.UndeadThreads.org) for directions. And more free \*Super Dollfie size patterns.

Print pages 2-8 for pattern



\* Dollfie , SD and SD13 are a registered trademarks of VOLKS US and is used here as a size reference only.

seam 1 & 2

seam 7

seam 4

SD , SDD , SD13

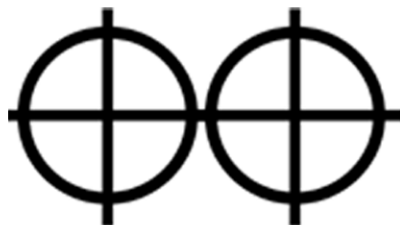
# KIMONO FRONT

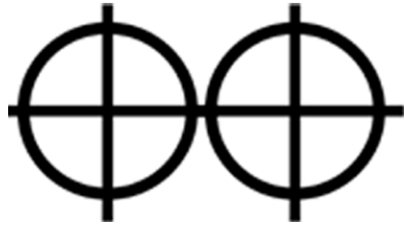
## cut 2

2004 UndeadThreads.com

seam 5

Hem 6





seam 5

FRONT  
part B

Hem 6

hem 11

seam 1 & 2

seam 4

seam 7

seam 5

fold center back

fold line

seam 4

seam 4

**COLLAR**  
CUT 1 ON FOLD

crease line

seam 4

seam 4

SD SD13

**KIMONO BACK**

cut 1 on fold

UndeadThreads.com



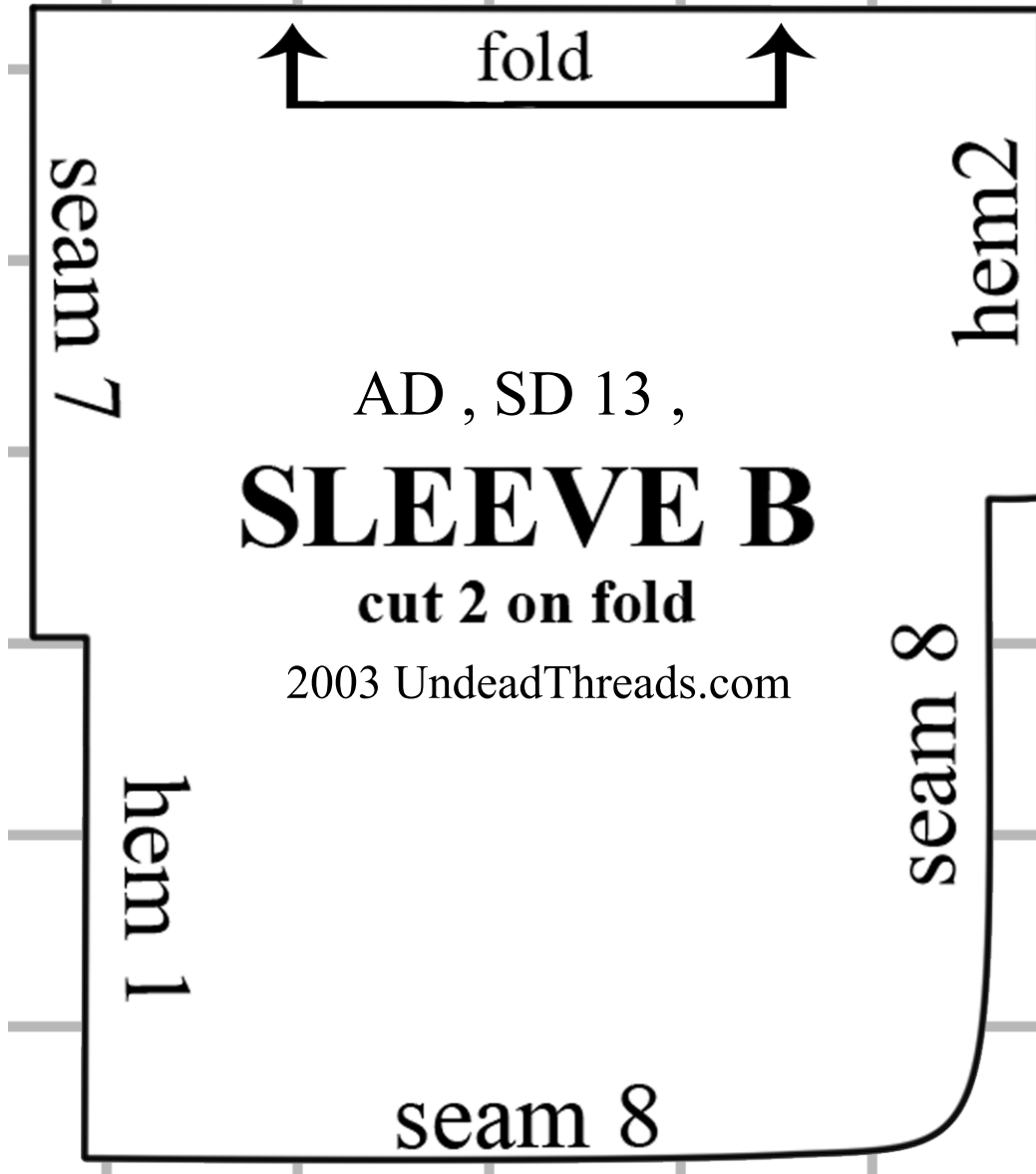
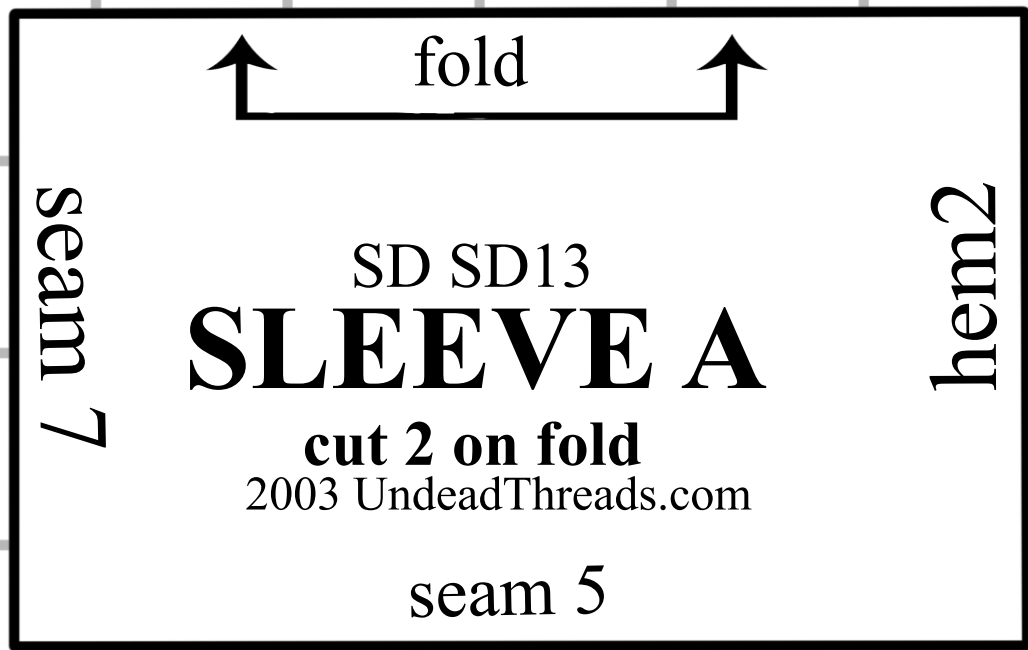


BACK  
part b

seam 5

fold center back

hem 11



↑ fold ↑

seam 7

hem2

SD , SD 13

# SLEEVE C

cut 2 on fold

2003 UndeadThreads.com

seam 8

hem 1

seam 8

FOLD LINE

crease line

**OBE**  
CUT 1 ON FOLD  
SD , SD13

**UndeadThreads.com**